



Casa Milano

## TECHNICAL DATA SHEET

### Casa Milano

Mortice Latch Case Satin Stainless Steel

**150300400686**

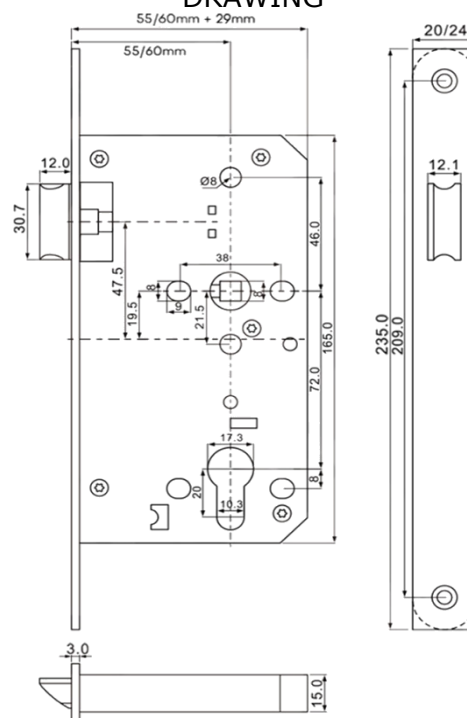
The CM Mortice Latch Case is a premium quality latch case designed for robust security and reliable performance. Made from high-grade stainless steel (SS304), this latch case is built to withstand the rigors of everyday use while maintaining a sleek and modern appearance.

### SPECIFICATION

- 55mm/60mm backset.
- SS 304 forend, strike plate and follower.
- SS 304 latch bolt.
- Easy reversible latch bolt - without tampering with lock mechanism
- Tested to Grade X: 200,000 test cycles.
- Forend and strike plate available square or radius.
- Pierced to accept bolt through furniture and
- Escutcheons at 38mm centres.
- Suitable for 120min timber and 240min metal doors.
- Lever handle operates latch.
- Supplied with strike plate.



### DRAWING



**10**  
YEARS  
MECHANICAL  
WARRANTY



Follow us - [casamilano.it](https://www.casamilano.it)



[www.casamilano.it](https://www.casamilano.it)

Email us - [info@casamilanoitaly.com](mailto:info@casamilanoitaly.com)